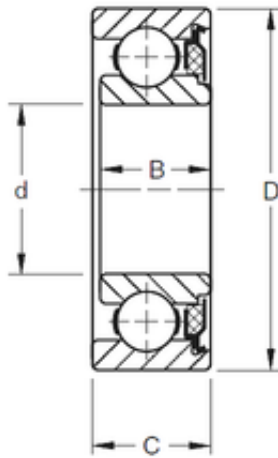




## ISO BEARING-SINGAPORE (PTE)LTD.



12 mm x 32 mm x 12,19 mm Timken 201KT  
deep groove ball bearings

Bearing No. 201KT

Size	12x32x12.19 mm
Bore Diameter	12 mm
Outer Diameter	32 mm
Width	12,19 mm
d	12 mm
D	32 mm
B	12,19 mm
C	12,7 mm
Weight	0,045 Kg
Basic dynamic load rating (C)	7,68 kN

201KT Bearing 2D drawings and 3D CAD models