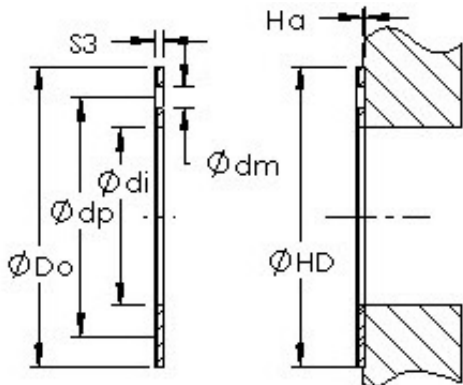




# ISO BEARING-SINGAPORE (PTE)LTD.



AST20 WC221B Bearing 2D drawings and 3D CAD models

## AST AST20 WC221B plain bearings

Bearing No. AST20 WC221B

|   |                 |
|---|-----------------|
| Bore Diameter   | 36,5252 mm      |
| Outer Diameter  | 63,5 mm         |
| Bearing Type  | thrust washer   |
| Shaft Dia., Nominal (d)   | 1.4380          |
| Bearing Outside Diameter, Nominal( $Do$ )                           | 2.500           |
| Washer Inside Diameter, Nominal ( $di$ )                            | 2               |
| Washer Inside Diameter Tolerance ( $di$ tol.) - $+0.010 / -0$       | $+0.010 / 0$    |
| Washer Outside Diameter, Nominal ( $Do$ )                           | 3               |
| Washer Outside Diameter Tolerance ( $Do$ tol.) - $+0 / -.010$       | $+0 / .010$     |
| Washer Thickness, Nominal ( $S3$ )                                  | 0               |
| Washer Thickness Tolerance ( $S3$ tol.) - $+0.035 / -0$             | $+0.035 / 0$    |
| Mounting Hole Dia. ( $dm$ )   | 0.192           |
| Mounting Hole Pitch Dia. ( $dp$ )                                   | 2.005           |
| Housing Counterbore Depth ( $Ha$ )                                  | 0.04            |
| Housing Counterbore Depth Tolerance ( $Ha$ tol.) - $+0.010 / -.010$ | $+0.010 / .010$ |
| Housing Counterbore Diameter, Nominal ( $HD$ )                      | 2.500           |



## ISO BEARING-SINGAPORE (PTE)LTD.

|  |  |
|--|--|
| Housing Counterbore<br>Diameter Tolerance (HD<br>tol.) - $+0.010 / -0$ | $+0.010 / 0$                                 |
| Material   | Carbon steel shell with<br>POM plastic liner |