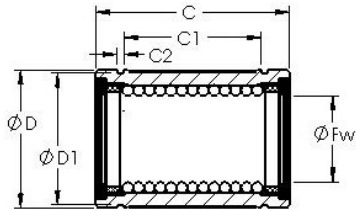


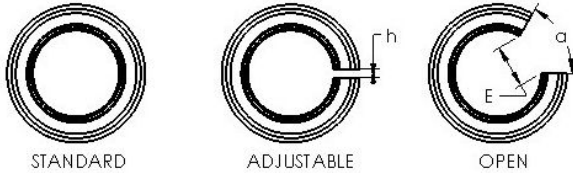


# ISO BEARING-SINGAPORE (PTE)LTD.



## AST LBE 20 linear bearings

Bearing No. LBE 20



Bore Diameter	20 mm
Bearing Type	standard type
Dynamic Load Rating (Cr)	617
Static Load Rating (Cor)	1,150
Shaft Dia. (Fw)	20.000
Outside Dia. (D)	32.000
Length ( C )	45.000
Groove-to-groove length (C1)	28.000
Groove Width (C2)	1.600
Groove Dia. (D1)	30.500
Weight (g)	84.50
Material	52100 chrome steel, or equivalent

LBE 20 Bearing 2D drawings and 3D CAD models